

**The Macmillan
Cancer
Improvement
Partnership
(MCIP) in
Manchester**

Janet Tonge

**MCIP Programme
Lead**

Local Context



- Manchester has some of the highest cancer levels in England.
- Cancer incidence: 720.3/100,000 population compared to 598.9/1000 for England

CCG	Incidence per 100,000 population (2012) All cancers	Number of cases
North Manchester	762.6 - Highest in England	713
Central Manchester	734.9 - Second highest in England	600
South Manchester	717.3 – Sixth highest in England	734

- Cancer based premature mortality rates (before age 75): 157.4 per 100,000 population compared to 109.3/100,000 are the second highest in England

CCG	Incidence all cancers deaths (under 75's) per 100,000 population (2012)	No. of cases (2012)
North Manchester	203 - 3rd highest	181
Central Manchester	168.8 - 36th highest	122
South Manchester	193.9 - 6th highest	178

MCIP Vision



Together Macmillan Cancer Support, the local NHS, St Ann's Hospice and Manchester City Council are working in partnership with people affected by cancer to understand their needs and expectations to deliver a more compassionate and effective standard of care. Anyone in Manchester who is affected by cancer can be confident they will receive comprehensive information, care and support and be treated with kindness, dignity and respect.

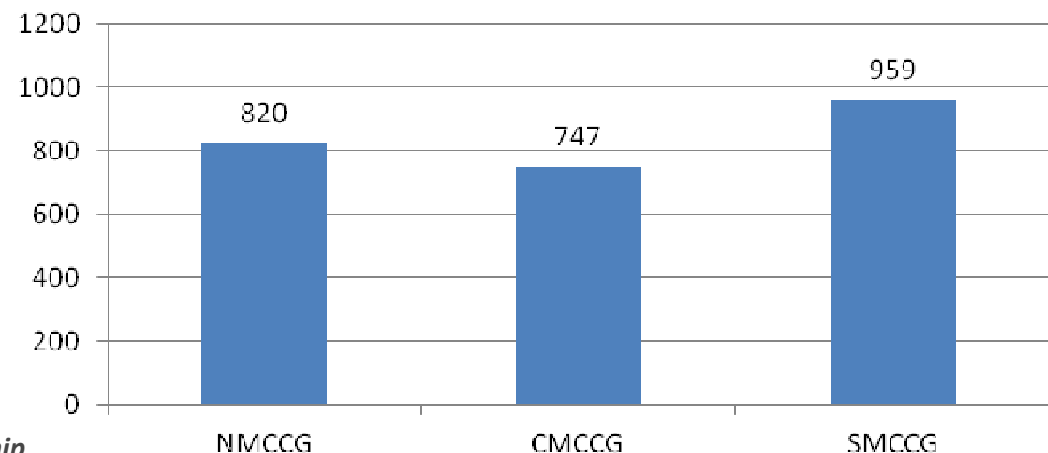
Lung and Breast Cancers



- 32% of Manchester's cancer premature mortality rate is caused by lung cancer.
- The average incidence of lung cancer across Manchester is: 160.9 per 100,000 population, compared to 84.8 for England.

CCG	Incidence per 100,000 population (2012)	Number of cases (2012)
North Manchester	189.6 - highest in England	165
Central Manchester	122.6 - 21st highest in England	90
South Manchester	169.8 - second highest in England	155

- Median survival from breast cancer is now >10 years.
- This chart shows the number of people alive in Manchester who have been diagnosed with breast cancer during the past 20 years:



MCIP Programme

Overview

Please refer to handouts



TOGETHER
WE ARE IMPROVING
YOUR CANCER CARE



North Manchester Palliative Sponsor: Moneeza Iqbal £360k			L&D Community Sponsor: Mandy Bailey £240k		Primary Palliative and End of Life Sponsors: Sarah Taylor, Amanda Myerscough & Denis Colligan £760k				Breast Pathway Sponsor: Nigel Bundred £250k		Crosscutting Breast & Lung Budget		Lung Pathway Sponsor: Phil Barber £250k				
Hub	Resources	Community Services	Health & Social Care £40k	ICS Training £10k	Macmillan Support £160k	Primary Care ICS Manchester Quality Mark £50k	Palliative Care £50k	Cancer & Palliative Care Facilitators £60k	End of Treatment Summary T4	Advanced Breast Cancer	Monitoring and Adherence	SRSA & Care Plans	Improving Palliative Care	Support Services	Early diagnosis	Diagnostic & Treatment Pathway	
Coordination	Mac Team Expansion	7 Day Service	AI for helpdesk	Support	Emergency Conversations Hub	Cancer Care Reviews	Practice Cancer Champions	Trainer 1	Palliative Care Facilitator & coordination	Referrals / Consent	Reviews & Training Primary Care	Management WHO Symptoms	Public Radio Interviews	Broad	Broad	GP Data & Risk Stratification	Optimising the pathway
Volunteer Coordinator	Palliative Care Consultants	High-lying	Helping at home	Commission & Delivery	UWB	Monitoring	Cancer Rights	ICD assessment & appropriate support	Between Clinical Trials	Education & Training CIC	Recruitment & Workshop	Virtual Care Plans	EMG	Lung	Intervention & Engagement	Service improvement	

User involvement – including Cancer Experience Forum / Sponsor: Val Bayliss-Baldwin / £70k

Brand & Communications / Sponsor: Nick Gomer / £30k



MCIP Strategic Summary

<p>Our vision is that everyone in Manchester who is affected by cancer will be able to say: "I had the best support and treatment from an expert team who made me feel cared for and in control"</p> <p>Together Macmillan Cancer Support, the local NHS, St Ann's Hospice and Manchester City Council are working in Partnership with people affected by cancer to understand their needs and expectations to deliver a more compassionate and effective standard of care. Anyone in Manchester who is affected by cancer can be confident they will receive comprehensive information, care and support and be treated with kindness, dignity and respect.</p>				
<p>Board Members</p> <p>Macmillan Cancer Support South, Central and North CEOs Penine Acute Trust University Hospital of South Manchester Central Manchester Foundation Trust</p>		<p>Manchester City Council The Christie Foundation Trust St Ann's Hospice People affected by cancer Strategic Clinical Network</p>		<p>Other Key Partners</p> <p>Manchester Cancer Local voluntary groups</p>
<p>Primary and Palliative Care:</p> <ul style="list-style-type: none"> Driving improvements in primary care via a Locally Commissioned Service leading to a Quality Mark for General Practice Improving palliative care through facilitated support and system improvements for cancer registers, advance care planning and Gold Standard Framework Development of a new model of palliative care in North Manchester based on Midhurst principles Identification of current triggers for palliative care input and identify improvements for lung and breast cancer patients 		<p>Community Care:</p> <ul style="list-style-type: none"> Driving improvement in cancer care by training non-cancer specialists in relevant cancer care topics Support Services: Identifying areas of greatest need and development of business cases for future commissioning 	<p>Lung Cancer:</p> <ul style="list-style-type: none"> Improving the early diagnosis of lung cancer via risk stratification and targeted screening Reducing diagnostic delays for symptomatic patients 	<p>Breast Cancer:</p> <ul style="list-style-type: none"> Developing a new model of post treatment follow up Review of the breast cancer pathway to improve accessibility for all Reviewing the pathway for patients with advanced breast cancer and recommending changes
<p>Information:</p> <ul style="list-style-type: none"> Improving the quality of written information between clinical teams and patients 		<p>Macmillan Care Support Funding Skilled Programme Team</p>		
<p>Partnership Commitment Organisational Commitment</p>		<p>Commissioning Support</p>		
<p>Macmillan's 9 Values</p> <ul style="list-style-type: none"> I was diagnosed early I understand so I can make good decisions I get the treatment and care which are best for my cancer, and my life Those around me are well supported I am treated with dignity and respect I know what I can do to help myself and who else can help me I can enjoy life I feel part of a community and I'm inspired to give something back I want to die well 				

Phase 1 - £2.35m Primary, community and palliative care



Locally Commissioned Service

- 90% of all Manchester's GP Practices have signed up
- 9700 patients on GP Cancer Registers will benefit
- Education to target knowledge and skill gaps in communication, early diagnosis, acute oncology, palliative and EOL care and survivorship.

Improving Palliative Care & EOL

- North Manchester –a community based approach to EOL and Palliative care with enhanced, better co-ordinated care.
- 3 Cancer and Palliative Care Improvement Facilitators and a Co-ordinator to increase numbers of advance care plans, recorded places of care and increase compliance with GSF.
- Possible gap of 3611 patients not currently on registers and 1512 on the registers

Improving the Health and Social Care workforce's knowledge of cancer

- The scoping of workforce requirements has now been completed
- A training package of £200k is being commissioned

Phase 2

£1.1m - Breast and Lung Cancer pathways



Breast Cancer projects

- **A new model of monitoring and aftercare** – recovery orientated – including mammographic surveillance, HWB events and end of treatment summaries
- **Improving advanced breast cancer care** - anticipatory planning, supported self-management and coordination between services
- **Improving patient experience through HNAs and written care plans** - better and more consistent use of HNAs and written care plans, signposting to support services.

Lung Cancer projects

- **Earlier diagnosis** – part of a national programme focussing on step change initiatives
- **Treatment and diagnostic pathways** – aims to reduce delays between diagnostic tests
- **Improving palliative care** – aims to improve links between teams caring for lung cancer patients and palliative care services.

Cross cutting projects

- **Support services** – identify priority areas for improvement and develop cases for change
- **Improvements to information** – aims to improve the written exchange of information at key points